



SYSTIMAX 360™
Product Guide

SYSTIMAX 360™ is redefining performance from every angle.

The next-generation infrastructure network, fueled by SYSTIMAX 360, is truly a network without limits. Engineered with customers in mind, SYSTIMAX 360 products deliver the design, speed and intelligence you need to take your business further.

Sleek, intuitive design offers superb ergonomics and an elegant appearance. Scorching speed takes on any current or emerging application with superior, consistent performance.

Built to be flexible, SYSTIMAX 360 accommodates built-in intelligence and intelligent ready solutions, pre-terminated copper and fiber solutions, single-mode fiber and laser optimized multimode fiber solutions, as well as shielded and unshielded twisted pair solutions. Making life better for IT personnel, SYSTIMAX 360 capabilities make network design, deployment and evolution easier.

Through the innovations of SYSTIMAX 360, CommScope® empowers you with unprecedented performance, usability and intelligence. We make it possible for enterprise executives and IT management across the globe to seize future opportunities and enhance profitability by powering your network for mission-critical, high-bandwidth and emerging applications.

All delivered in a new green packaging format for CommScope that continues our commitment to environmental stewardship.



Engineering meets elegance.
Speed meets intelligence.
Copper meets fiber.

**The future of networks
has arrived.**

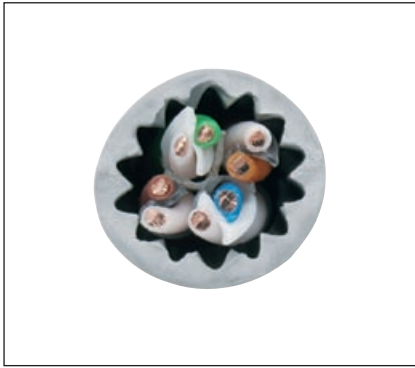


Contents

SYSTIMAX 360™ GigaSPEED® X10D 91 Series U/UTP Cables	4
SYSTIMAX 360™ GigaSPEED® XL 1100GS3 and GigaSPEED® X10D 1100GS6 Panels	7
SYSTIMAX 360™ GigaSPEED® XL PATCHMAX® GS3 and GigaSPEED® X10D PATCHMAX® GS6 Panels	9
SYSTIMAX 360™ Modular Panel	11
SYSTIMAX 360™ GigaSPEED® X10D MGS600 Information Outlet	12
SYSTIMAX 360™ GigaSPEED® X10D 360GS10E Patch Cord	13
SYSTIMAX GigaSPEED® X10D 91B Series F/UTP Cables	15
SYSTIMAX 360™ GigaSPEED® X10D F/UTP Modular Panels	16
SYSTIMAX GigaSPEED® X10D Shielded High Density Information Outlet	17
SYSTIMAX GigaSPEED® X10D F/UTP Patch Cords	18
SYSTIMAX 360™ G2 1U, 2U and 4U Shelves	20
SYSTIMAX 360™ G2 Modular Panels	22
SYSTIMAX 360G2 Panel and Shelf Accessories	23
InstaPATCH® 360 Pre-Terminated Fiber Solution	24
SYSTIMAX 360™ Distribution Panels	25
SYSTIMAX 360™ G2 Fiber Cartridges	26
SYSTIMAX 360 Ultra High Density Shelves and Modules	27
SYSTIMAX 360 iPatch® G2 High Density Fiber Shelf	28
SYSTIMAX 360™ iPatch® Panel Manager	29
SYSTIMAX 360™ iPatch® Network Manager	30

SYSTIMAX 360™ GigaSPEED® X10D

91 Series U/UTP Cables



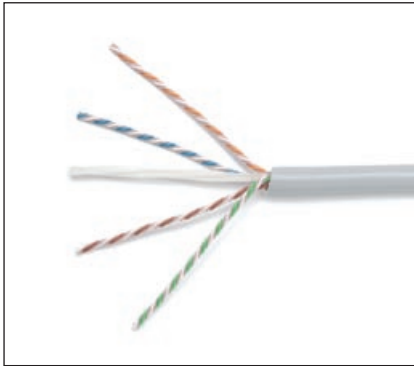
SYSTIMAX 360 GigaSPEED® X10D 1091B Series Cable

features and benefits

- Cable Diameter - 0.285 in. (7.24 mm)
- Optimized Material Technology (OMT) platform reduces cable diameter while optimizing transmission performance
- Electrical performance guaranteed to meet or exceed the channel specifications of Amendment 1 to ISO/IEC 1180:2001 Class E_A, and ANSI/TIA 568-C.2 Category 6A up to 500 MHz when used as part of a GigaSPEED X10D U/UTP Channel in registered SYSTIMAX installations
- 4-pair construction with finned inner jacket surface and isolator member provides the extra margin of performance required for high-bandwidth applications
- ETL Listed - 1091B Riser rated CMR and CMG - 2091B Plenum rated CMP
- IEC Certified - 3091B is a LSZH cable tested to IEC 60332-3, IEC 61034, and IEC 60754-2
- 1091B and 2091B are ETL Verified Cat 6A
- Can support network line speeds up to 10 gigabits per second
- Qualifies for the SYSTIMAX 20-Year Extended Product Warranty and Applications Assurance when included as part of a registered SYSTIMAX GigaSPEED X10D channel
- Improves density by 54% compared to the industry standard - 6.3 cables per square inch with a 40% fill ratio versus only 4.1 cables in standard size
- Smaller cord improves usable density on interconnects and cross connects -Packaging materials reduced without compromising package durability
- RoHS compliant

SPECIFICATIONS

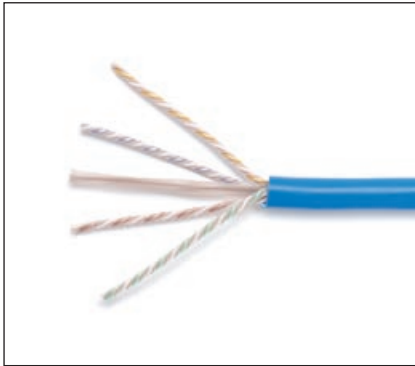
	1091B	2091B	3091B
Nominal Outer Jacket OD	0.285 in. (7.24 mm)	0.285 in. (7.24 mm)	0.285 in. (7.24 mm)
Nominal Outer Jacket Thickness	0.05 in. (1.27 mm)	0.05 in. (1.27 mm)	0.05 in. (1.27 mm)
Maximum Pulling Tension	25 lbs (11.3 kg)	25 lbs (11.3 kg)	25 lbs (11.3 kg)
Nominal Cable Weight	37.30 lbs/kft (16.9 kg)	40.70 lbs/kft (18.5 kg)	36.90 lbs/kft (16.7 kg)
Operating Temperature	-4°F to 140°F (-20°C to 60°C)	-4°F to 140°F (-20°C to 60°C)	-4°F to 140°F (-20°C to 60°C)
Installation Temperature	32°F to 140°F (0°C to 60°C)	32°F to 140°F (0°C to 60°C)	32°F to 140°F (0°C to 60°C)
Conductor Diameter	23 AWG	23 AWG	23 AWG
Jacket Material	PVC	Low Smoke PVC	Low Smoke Zero Halogen
ETL Type	CMR, CMG	CMP	
IEC Verified			IEC 60332-3-22
Nominal Velocity of Propagation	65%	67%	65%
Maximum DC Resistance	8.00 Ohms/100 m	8.00 Ohms/100 m	8.00 Ohms/100 m
Maximum DC Resistance	4%	4%	4%
Unbalanced			
Maximum Mutual	6.0 nF/100 m	6.0 nF/100 m	6.0 nF/100 m
Capacitance at 1 KHz			
Minimum Dielectric Strength	1500 VAC or 2500 VDC	1500 VAC or 2500 VDC	1500 VAC or 2500 VDC
Voltage Safety Rating	300 Volts per NEC 800.179	300 Volts per NEC 800.179	300 Volts per NEC 800.179



SYSTIMAX 360 GigaSPEED® X10D 1091B Series Cable

ORDERING INFORMATION:

Material ID	Product Number	Description
Non Plenum 1091B		
760105114	1091B SL 4/23 R1000	GigaSPEED X10D 1091B Category 6A U/UTP Cable, slate jacket, 4 pair count, 1000 ft (305 m) length, reel
760107078	1091B SL 4/23 W1000	GigaSPEED X10D 1091B Category 6A U/UTP Cable, slate jacket, 4 pair count, 1000 ft (305 m) length, We Tote Box
760105858	1091B SL 4/23 R3000	GigaSPEED X10D 1091B Category 6A U/UTP Cable, slate jacket, 4 pair count, 3000 ft (914 m) length, reel
760105742	1091B BK 4/23 R1000	GigaSPEED X10D 1091B Category 6A U/UTP Cable, black jacket, 4 pair count, 1000 ft (305 m) length, reel
760107086	1091B BK 4/23 W1000	GigaSPEED X10D 1091B Category 6A U/UTP Cable, black jacket, 4 pair count, 1000 ft (305 m) length, We Tote Box
760105759	1091B BL 4/23 R1000	GigaSPEED X10D 1091B Category 6A U/UTP Cable, blue jacket, 4 pair count, 1000 ft (305 m) length, reel
760107094	1091B BL 4/23 W1000	GigaSPEED X10D 1091B Category 6A U/UTP Cable, blue jacket, 4 pair count, 1000 ft (305 m) length, We Tote Box
760105833	1091B BL 4/23 R3000	GigaSPEED X10D 1091B Category 6A U/UTP Cable, blue jacket, 4 pair count, 3000 ft (914 m) length, reel
760105767	1091B LB 4/23 R1000	GigaSPEED X10D 1091B Category 6A U/UTP Cable, light blue jacket, 4 pair count, 1000 ft (305 m) length, reel
760107102	1091B LB 4/23 W1000	GigaSPEED X10D 1091B Category 6A U/UTP Cable, light blue jacket, 4 pair count, 1000 ft (305 m) length, We Tote Box
760105775	1091B GR 4/23 R1000	GigaSPEED X10D 1091B Category 6A U/UTP Cable, green jacket, 4 pair count, 1000 ft (305 m) length, reel
760107110	1091B GR 4/23 W1000	GigaSPEED X10D 1091B Category 6A U/UTP Cable, green jacket, 4 pair count, 1000 ft (305 m) length, We Tote Box
760105783	1091B OR 4/23 R1000	GigaSPEED X10D 1091B Category 6A U/UTP Cable, orange jacket, 4 pair count, 1000 ft (305 m) length, reel
760107128	1091B OR 4/23 W1000	GigaSPEED X10D 1091B Category 6A U/UTP Cable, orange jacket, 4 pair count, 1000 ft (305 m) length, We Tote Box
760105791	1091B RD 4/23 R1000	GigaSPEED X10D 1091B Category 6A U/UTP Cable, red jacket, 4 pair count, 1000 ft (305 m) length, reel
760107136	1091B RD 4/23 W1000	GigaSPEED X10D 1091B Category 6A U/UTP Cable, red jacket, 4 pair count, 1000 ft (305 m) length, We Tote Box
760105817	1091B WH 4/23 R1000	GigaSPEED X10D 1091B Category 6A U/UTP Cable, white jacket, 4 pair count, 1000 ft (305 m) length, reel
760107144	1091B WH 4/23 W1000	GigaSPEED X10D 1091B Category 6A U/UTP Cable, white jacket, 4 pair count, 1000 ft (305 m) length, We Tote Box
760105841	1091B WH 4/23 R3000	GigaSPEED X10D 1091B Category 6A U/UTP Cable, white jacket, 4 pair count, 3000 ft (914 m) length, reel
760105825	1091B YL 4/23 R1000	GigaSPEED X10D 1091B Category 6A U/UTP Cable, yellow jacket, 4 pair count, 1000 ft (305 m) length, reel
760107151	1091B YL 4/23 W1000	GigaSPEED X10D 1091B Category 6A U/UTP Cable, yellow jacket, 4 pair count, 1000 ft (305 m) length, We Tote Box

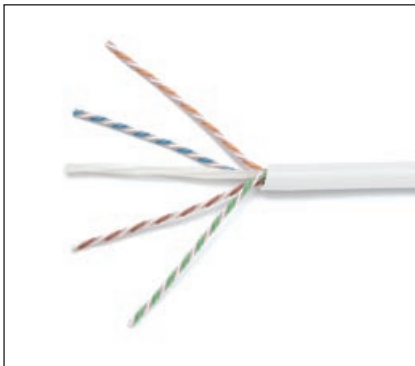


SYSTIMAX 360 GigaSPEED® X10D 2091B Series Cable

ORDERING INFORMATION:

Material ID	Product Number	Description
Plenum 2091B		
760105338	2091B BL 4/23 R1000	GigaSPEED X10D 2091B Category 6A U/UTP Cable, blue jacket, 4 pair count, 1000 ft (305 m) length, reel
760107201	2091B BL 4/23 W1000	GigaSPEED X10D 2091B Category 6A U/UTP Cable, blue jacket, 4 pair count, 1000 ft (305 m) length, We Tote Box
760105965	2091B BL 4/23 R3000	GigaSPEED X10D 2091B Category 6A U/UTP Cable, blue jacket, 4 pair count, 3000 ft (914 m) length, reel
760105890	2091B GR 4/23 R1000	GigaSPEED X10D 2091B Category 6A U/UTP Cable, green jacket, 4 pair count, 1000 ft (305 m) length, reel
760107219	2091B GR 4/23 W1000	GigaSPEED X10D 2091B Category 6A U/UTP Cable, green jacket, 4 pair count, 1000 ft (305 m) length, We Tote Box
760105908	2091B OR 4/23 R1000	GigaSPEED X10D 2091B Category 6A U/UTP Cable, orange jacket, 4 pair count, 1000 ft (305 m) length, reel
760107227	2091B OR 4/23 W1000	GigaSPEED X10D 2091B Category 6A U/UTP Cable, orange jacket, 4 pair count, 1000 ft (305 m) length, We Tote Box
760105924	2091B RD 4/23 R1000	GigaSPEED X10D 2091B Category 6A U/UTP Cable, red jacket, 4 pair count, 1000 ft (305 m) length, reel
760107243	2091B RD 4/23 W1000	GigaSPEED X10D 2091B Category 6A U/UTP Cable, red jacket, 4 pair count, 1000 ft (305 m) length, We Tote Box
760105932	2091B SL 4/23 R1000	GigaSPEED X10D 2091B Category 6A U/UTP Cable, slate jacket, 4 pair count, 1000 ft (305 m) length, reel
760107250	2091B SL 4/23 W1000	GigaSPEED X10D 2091B Category 6A U/UTP Cable, slate jacket, 4 pair count, 1000 ft (305 m) length, We Tote Box
760105981	2091B SL 4/23 R3000	GigaSPEED X10D 2091B Category 6A U/UTP Cable, slate jacket, 4 pair count, 3000 ft (914 m) length, reel
760105940	2091B WH 4/23 R1000	GigaSPEED X10D 2091B Category 6A U/UTP Cable, white jacket, 4 pair count, 1000 ft (305 m) length, reel
760107268	2091B WH 4/23 W1000	GigaSPEED X10D 2091B Category 6A U/UTP Cable, white jacket, 4 pair count, 1000 ft (305 m) length, We Tote Box
760105973	2091B WH 4/23 R3000	GigaSPEED X10D 2091B Category 6A U/UTP Cable, white jacket, 4 pair count, 3000 ft (914 m) length, reel
760105957	2091B YL 4/23 R1000	GigaSPEED X10D 2091B Category 6A U/UTP Cable, yellow jacket, 4 pair count, 1000 ft (305 m) length, reel
760107276	2091B YL 4/23 W1000	GigaSPEED X10D 2091B Category 6A U/UTP Cable, yellow

ORDERING INFORMATION:



SYSTIMAX 360 GigaSPEED® X10D 3091B Series Cable

Material ID	Product Number	Description
LSZH 3091B		
760105122	3091B WH 4/23 R1000	GigaSPEED X10D 3091B Category 6A U/UTP Cable, white jacket, 4 pair count, 1000 ft (305 m) length, reel
760107318	3091B WH 4/23 W1000	GigaSPEED X10D 3091B Category 6A U/UTP Cable, white jacket, 4 pair count, 1000 ft (305 m) length, We Tote Box
760106054	3091B WH 4/23 R3000	GigaSPEED X10D 3091B Category 6A U/UTP Cable, white jacket, 4 pair count, 3000 ft (914 m) length, reel
760106039	3091B BL 4/23 R1000	GigaSPEED X10D 3091B Category 6A U/UTP Cable, blue jacket, 4 pair count, 1000 ft (305 m) length, reel
760107326	3091B BL 4/23 W1000	GigaSPEED X10D 3091B Category 6A U/UTP Cable, blue jacket, 4 pair count, 1000 ft (305 m) length, We Tote Box
760106062	3091B BL 4/23 R3000	GigaSPEED X10D 3091B Category 6A U/UTP Cable, blue jacket, 4 pair count, 3000 ft (914 m) length, reel
760106047	3091B SL 4/23 R1000	GigaSPEED X10D 3091B Category 6A U/UTP Cable, slate jacket, 4 pair count, 1000 ft (305 m) length, reel
760107334	3091B SL 4/23 W1000	GigaSPEED X10D 3091B Category 6A U/UTP Cable, slate jacket, 4 pair count, 1000 ft (305 m) length, We Tote Box
760106070	3091B SL 4/23 R3000	GigaSPEED X10D 3091B Category 6A U/UTP Cable, slate jacket, 4 pair count, 3000 ft (914 m) length, reel

SYSTIMAX 360™ GigaSPEED® XL 1100GS3 and GigaSPEED® X10D 1100GS6 Panels



SYSTIMAX 360 GigaSPEED X10D
1100GS6 24 Port, Front View



SYSTIMAX 360 GigaSPEED X10D
1100GS6 24 Port, Rear View



SYSTIMAX 360 GigaSPEED X10D
1100GS6 Angled 48 Port



SYSTIMAX 360 iPatch 1100GS6 24 Port

CommScope's new panel platform, Evolve, is an intelligent/intelligent-ready modular panel system designed to accommodate unshielded multi-connector modules, individual shielded information outlets, pre-terminated copper trunks and future connector designs. For applications that demand intelligence today, the panel platform offers built-in intelligence, providing insight deep into your network for vision, knowledge and control of your network infrastructure. If, however, you are not ready for intelligence today but want the flexibility to add it later, the intelligent ready panel platform allows customers to evolve to intelligence deployments as their network needs change. Supporting architectures with shorter cords and cables and delivering improved performance, this new panel platform makes 10G easier – and life better – than ever before.

features and benefits

- GS6 multi-connector module utilizes patented straddle pair cross-over contacts and new patent pending technologies to achieve efficient alien crosstalk reduction ensuring industry standards are met for Category 6A/E_A performance levels
- Architectural design and flexibility for the GigaSPEED X10D (GS6) solution - supports 5 meter cables in 3 and 4 connector channels, 3 meter cables in 2 connector channels and cross connect cords down to 1 meter
- Alien Crosstalk complies to Industry standards; TIA-568-C and IEC 11801
- Easy cable routing and bundling through improved rear cable management
- Supports deployment of InstaPATCH® Cu pre-terminated copper solutions
- Available in 24-port (1U) and 48-port (2U) options
- Straight and Angled constructions, both iPatch (intelligence) Ready
- Features the elegant SYSTIMAX 360 design
- Available in iPatch-Ready versions (field upgradable to iPatch without the need to remove patch cords, meaning no network downtime) or factory assembled iPatch versions
- No hardware required when installing iPatch Ready upgrade kits

SPECIFICATIONS

	24 Port (1U)	48 Port (2U)
Height	1.75 in (4.45 cm)	3.5 in (8.89 cm)
Width	19 in (48.26 cm)	19 in (48.26 cm)
Depth (including cable management)	7.2 in (18.29 cm)	7.2 in (18.29 cm)
Flammability Rating	UL rated 94 V-0	UL rated 94 V-0
Operating Temperature	14°F to 140°F (-10°C to 60°C)	14°F to 140°F (-10°C to 60°C)
Storage Temperature	-40°F to 158°F (-40°C to 70°C)	-40°F to 158°F (-40°C to 70°C)
Humidity	95% (non-condensing)	95% (non-condensing)



SYSTIMAX 360 iPatch Upgrade Kit

ORDERING INFORMATION:

Material ID	Product Number	Description	iPatch Ready	iPatch
760152587	360-IPR-1100-E-GS6-1U-24	360 1100GS6 24-Port Evolve Patch Panel	X	
760152595	360-IPR-1100-E-GS6-2U-48	360 1100GS6 48-Port Evolve Patch Panel	X	
760151324	360-IPR-1100A-E-GS6-1U-24	360 1100GS6 24-Port Evolve Angled Patch Panel	X	
760151779	360-IPR-1100A-E-GS6-2U-48	360 1100GS6 48-Port Evolve Angled Patch Panel	X	
760152561	360-IPR-1100-E-GS3-1U-24	360 1100GS3 24-Port Evolve Patch Panel	X	
760152579	360-IPR-1100-E-GS3-2U-48	360 1100GS3 48-Port Evolve Patch Panel	X	
760151308	360-IPR-1100A-E-GS3-1U-24	360 1100GS3 24-Port Evolve Angled Patch Panel	X	
760151753	360-IPR-1100A-E-GS3-2U-48	360 1100GS3 48-Port Evolve Angled Patch Panel	X	
760152363	360-iP-1100-E-GS6-1U-24	360 iPatch 1100GS6 24-Port Evolve Patch Panel		X
760152348	360-iP-1100-E-GS6-2U-48	360 iPatch 1100GS6 48-Port Evolve Patch Panel		X
760152355	360-iP-1100-E-GS3-1U-24	360 iPatch 1100GS3 24-Port Evolve Patch Panel		X
760152330	360-iP-1100-E-GS3-2U-48	360 iPatch 1100GS3 48-Port Evolve Patch Panel		X

Note: iPatchReady panels are upgradable to iPatch with the addition of the iPatch Upgrade Kits.

ORDERING INFORMATION:

Material ID	Product Number	Description
760151183	360-IPR-1100-GS6-DM6	360 1100GS6 Evolve Distribution Module 6-Port
760151167	360-IPR-1100-GS3-DM6	360 1100GS3 Evolve Distribution Module 6-Port
760155739	360-E-KIT-1U	360 1U Evolve Panel Kit for both GS6 and GS3
760155747	360-E-KIT-2U	360 2U Evolve Panel Kit for both GS6 and GS3
760152785	360-A-E-KIT-1U	360 Angled 1U Evolve Panel Kit for both GS6 and GS3
760152793	360-A-E-KIT-2U	360 Angled 2U Evolve Panel Kit for both GS6 and GS3
760152769	360-1100-LKP-1-24	360 1100 Evolve Panel - Label Kit (1-24) for both GS6 and GS3
760152777	360-1100-LKP-25-48	360 1100 Evolve Panel - Label Kit (25-48) for both GS6 and GS3
760104992	360-iP-UP-KIT-1100-24	360 iPatch Upgrade Kit for 360 1100 24-Port Panel, 10 Pack
760105015	360-iP-UP-KIT-1100-48	360 iPatch Upgrade Kit for the 360 1100 48-Port Panel, 5 Pack
760152280	360-iP-UP-KITE-24	360 iPatch Upgrade Kit for 360 Evolve 24-Port Panel, 10 Pack
760152298	360-iP-UP-KITE+PMAX-48	360 iPatch Upgrade Kit for 360 Evolve and PATCHMAX 48-Port Panels, 5 Pack
760152538	360-E-C-1U	360 Evolve Panel Front Cover 1U
760152546	360-E-C-2U	360 Evolve Panel Front Cover 2U

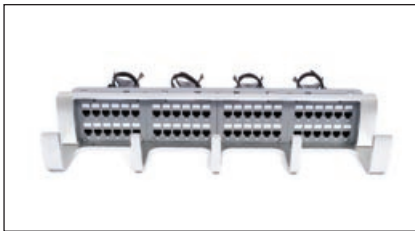
SYSTIMAX 360™ GigaSPEED® XL PATCHMAX® GS3 and GigaSPEED® X10D PATCHMAX® GS6 Panels



SYSTIMAX 360 GigaSPEED X10D
1100GS6 24 Port, Front View



SYSTIMAX 360 GigaSPEED X10D
PATCHMAX GS6, Rear View



SYSTIMAX 360 GigaSPEED X10D
PATCHMAX GS6, 48-Port

features and benefits

- PATCHMAX GS6 supports 5 meter cables in 3 and 4 connector channels, 3 meter cables in 2 connector channels and cross connect cords down to 1 meter
- Alien Crosstalk complies to Industry standards; TIA-568-C and IEC 11801
- Improved rear cable manager makes cable routing and bundling easier
- Supports deployment of InstaPATCH Cu pre-terminated copper
- Available in 24-port and 48-port configuration
- Features elegant SYSTIMAX 360 design
- Innovative 2-way mounting and terminating improving installation for limited rear access applications
- Distribution modules can be snapped onto front of panel for easy front access to rear 110 type IDC termination field
- Designed for simplified administration with built-in cord retainer fingers
- Allows all 24 cords to be routed in the same direction
- 1 to 24-port labeling and identification
- Meets TIA-606-A labeling standard
- Available in iPatch-Ready versions (field upgradable to iPatch without the need to remove patch cords, meaning no network downtime) or factory assembled iPatch versions

SPECIFICATIONS

Height	3.5 in (8.89 cm)
Width	19 in (48.26 cm)
Depth (front)	4 in (10.16 cm)

ORDERING INFORMATION:

Material ID	Product Number	Description	iPatch Ready	iPatch
760102251	360-PM-GS6-2U-24	360 PATCHMAX GS6 24-Port Patch Panel	X	
760128207	360-PM-GS6-2U-48	360 PATCHMAX GS6 48-Port Patch Panel	X	
760102244	360-PM-GS3-2U-24	360 PATCHMAX GS3 24-Port Patch Panel	X	
760117366	360-PM-GS3-2U-48	360 PATCHMAX GS3 48-Port Patch Panel	X	
760130393	360-iP-PMAX-GS6-24	360 iPatch PATCHMAX GS6 24-Port Panel		X
760130401	360-iP-PMAX-GS6-48	360 iPatch PATCHMAX GS6 48-Port Panel		X
760123489	360-iP-PMAX-GS3-24	360 iPatch PATCHMAX GS3 24-Port Panel		X
760123497	360-iP-PMAX-GS3-48	360 iPatch PATCHMAX GS3 48-Port Panel		X



SYSTIMAX 360 GigaSPEED XL
PATCHMAX GS3 Distribution Module

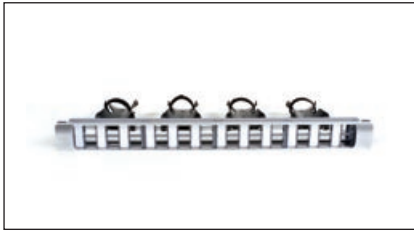
ORDERING INFORMATION:

Material ID	Product Number	Description
760102277	360-PM-GS6-DM6	360 PATCHMAX GS6 6-Port Distribution Module Kit
760128215	360-PM-GS6-DM12	360 PATCHMAX GS6 12-Port Distribution Module Kit
760108993	360-PM-KIT-2U-24	360 PATCHMAX 2U Panel Kit, 24-Port
760117408	360-PM-KIT-2U-48	360 PATCHMAX 2U Panel Kit, 48-Port
760102269	360-PM-GS3-DM	360 PATCHMAX GS3 6-Port Distribution Module Kit
760117382	360-PM-GS3-DM-12	360 PATCHMAX GS3 12-Port Distribution Module Kit
760101931	360-1100-BEZEL-1U	360 1100 Bezel Kit - 1U
760101949	360-1100-BEZEL-2U	360 1100 Bezel Kit - 2U
760104398	360-RCM-BM	360 Rear Cable Management (Bar Mountable)
760104737	360-RCM-RM	360 Rear Cable Management (Rack Mountable)
760152298	360-iP-UP-KITE+PMAx-48	360 iPatch Upgrade Kit for 360 Evolve and PATCHMAX 48-Port Panels, 5 Pack
760152306	360-iP-UP-KIT-PMAx-2U-24	360 iPatch Upgrade Kit, PATCHMAX 24-Port, 2U

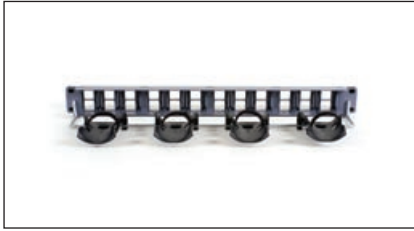
SYSTIMAX 360™ Modular Panel

features and benefits

- Eliminates the need for separate tie wrap components and offers facilitated installation and panel back dressing through simplified cable bundling
- Available in a 24 port (1U) configuration
- Features the elegant SYSTIMAX 360 design
- Supports the deployment of InstaPATCH® Cu pre-terminated copper solutions



SYSTIMAX 360 Modular Panel, front view



SYSTIMAX 360 Modular Panel, rear view



SYSTIMAX 360 Modular Panel with MGS600 Information Outlets

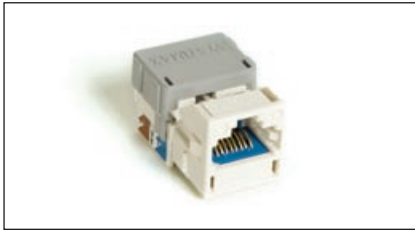
SPECIFICATIONS

Overall Height	1.75 in. (4.45 cm)
Overall Width	19 in. (48.26 cm)
Depth (including cable management)	7.2 in. (18.29 cm)
Flammability Rating	UL rated 94 V-0
Operating Temperature	14°F to 140°F (-10°C to 60°C)
Storage Temperature	-40°F to 158°F (-40°C to 70°C)
Humidity	95% (non-condensing)

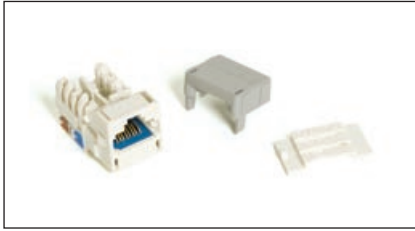
ORDERING INFORMATION:

Material ID	Product Number	Description
760104273	360-MOD-1U-24	360 Modular 24-Port Patch Panel
760104463	360-MOD-1U-BEZEL	360 Modular Panel Cover Kit
760104281	360-MOD-1U-LABEL	360 Modular Panel Label Kit, 10 sheets, 72 labels per sheet, 720 labels total
760109728	360-MOD-1U-LABEL-A4	360 Modular Panel Label Kit, 10 sheets, 72 labels per sheet, 720 labels total A4

SYSTIMAX 360™ GigaSPEED® X10D MGS600 Information Outlet



SYSTIMAX 360 GigaSPEED X10D MGS600



SYSTIMAX 360 GigaSPEED X10D MGS600 with Icon



SYSTIMAX 360 GigaSPEED X10D MGS600 - Side View

features and benefits

- Electrical performance guaranteed to meet or exceed the channel specifications of Amendment 1 to ISO/IEC 11801: 2002 Class E_A and ANSI/TIA-568-C.2 Category 6A when used as part of a GigaSPEED X10D UTP Channel in registered SYSTIMAX installations
- Patented crossing of straddling pair contacts enables efficient alien crosstalk reduction in the channel
- Snaps into standard CommScope M-Series faceplates, surface-mount boxes, consolidation point boxes and SYSTIMAX Modular Panels. Can also be mounted either at 90 degrees (straight) or 45 degrees (angled) in any SYSTIMAX faceplate
- Universal design and label supports both T568 A & B wiring
- IDC connector terminations on rear of base allow quick and easy installation of 22 to 24 AWG cable
- Optional Plastic Icons (M61A) and Dust Covers (M20A) available in several colors
- Optimal performance is achieved when using the GigaSPEED X10D 360GS10E patch cords; however, the MGS600 is fully backwards compatible
- UL® listed
- Can support network line speeds up to at least 10 gigabits per second
- Qualifies for the SYSTIMAX 20-Year Extended Product Warranty and Applications Assurance when included as part of a registered SYSTIMAX GigaSPEED X10D channel

ORDERING INFORMATION:

Material ID	Product Number	Description
760092361	MGS600 -003 BLACK	360 GigaSPEED® X10D MGS600 Information Outlet, black
760092379	MGS600 -112 ORANGE	360 GigaSPEED® X10D MGS600 Information Outlet, orange
760092387	MGS600 -123 YELLOW	360 GigaSPEED® X10D MGS600 Information Outlet, yellow
760092403	MGS600 -226 GREEN	360 GigaSPEED® X10D MGS600 Information Outlet, green
760092411	MGS600 -246 IVORY	360 GigaSPEED® X10D MGS600 Information Outlet, ivory
760092429	MGS600 -262 WHITE	360 GigaSPEED® X10D MGS600 Information Outlet, white
760092437	MGS600 -270 GRAY	360 GigaSPEED® X10D MGS600 Information Outlet, gray
760092445	MGS600 -317 RED	360 GigaSPEED® X10D MGS600 Information Outlet, red
760092452	MGS600 -318 BLUE	360 GigaSPEED® X10D MGS600 Information Outlet, blue
760092460	MGS600 -361 VIOLET	360 GigaSPEED® X10D MGS600 Information Outlet, violet
760092478	MGS600 -148 ALMOND	360 GigaSPEED® X10D MGS600 Information Outlet, almond
760110957	MGS600-BULK-003	360 GigaSPEED® X10D MGS600 Information Outlet, Black, 100 Pack
760110965	MGS600-BULK-246	360 GigaSPEED® X10D MGS600 Information Outlet, Ivory, 100 Pack
760110973	MGS600-BULK-262	360 GigaSPEED® X10D MGS600 Information Outlet, White, 100 Pack
760110981	MGS600-BULK-318	360 GigaSPEED® X10D MGS600 Information Outlet, Blue, 100 Pack

SYSTIMAX 360™ GigaSPEED® X10D 360GS10E Patch Cord



SYSTIMAX 360 GigaSPEED X10D 360GS10E Patch Cord

features and benefits

- Electrical performance guaranteed to meet or exceed the channel specifications of Amendment 1 to ISO/IEC 11801:2002 Class E_A and ANSI/TIA-568-C.2 Category 6A up to 500 MHz when used as part of a GigaSPEED X10D UTP Channel in registered SYSTIMAX installations
- ETL/cETL listed
- Can support network line speeds up to at least 10 gigabits per second
- Certified component of an integrated GigaSPEED X10D Solution
- Qualifies for the SYSTIMAX 20-Year Extended Product Warranty and Applications Assurance when included as part of a registered SYSTIMAX GigaSPEED X10D channel

GIGASPEED X10D 360GS10E MODULAR PATCH CORD

Material ID	Product Number	Description	Modular Jack Color	Cord Color Options	UOM	Cable/Cordage Length Options
CPCSSX2	360GS10E	360GS10E Solid Cordage	0	1,2,3,4,6,7,8,9,B,C,Z	F, M	3-100ft / 1-30m
BPCSSX2	360GS10E-10PK	360GS10E Solid Cordage, 10-pack	0	1,2,3,4,6,7,8,9,B,C,Z	F, M	3-25ft / 1-8m
CPCSSX3	360GS10E-X3	360GS10E 10/100BASE-T 2X3 & 1X4 Crossover Solid Cordage	0	1,2,3,4,6,7,8,9,B,C, Z	F, M	3-100ft / 1-30m
CPCS4X2	360GS10E117	360GS10E Single-ended Solid Cordage	0	1,2,3,4,6,7,8,9,B,C,Z	F, M	3-100ft / 1-30m
CPCSSX5	360GS10E-X5	360GS10E 1000BASE-T MDI-X Crossover Solid Cordage	0	1,2,3,4,6,7,8,9,B,C,Z	F, M	3-100ft / 1-30m
CPCPPX2	360GS10E-K	360GS10E Keyed Plug Solid Cordage	0	1,2,3,4,6,7,8,9,B,C,Z	F, M	3-100ft / 1-30m
CPXP4X2	360GS10E117-K	360GS10E Keyed Plug Single-ended Solid Cordage	0	1,2,3,4,6,7,8,9,B,C,Z	F, M	3-100ft / 1-30m
CPCRRX2	360GS10E-SM*	SecureMAX 360GS10E Tamper-resistant Patch Cord (Double side lock)	0	1,2,3,4,6,7,8,9,B,C, Z	F, M	3-100ft / 1-30m
CPCRSX2	360GS10E-SM-360-GS10E*	SecureMAX 360GS10E Tamper-resistant Patch Cord (Single side lock)	0	1,2,3,4,6,7,8,9,B,C,Z	F, M	3-100ft / 1-30m
CPCSSY2	360GS10E-P	360GS10E Solid Plenum Cordage	0	1,4,6,7,8,9,C,Z	F, M	3-100ft / 1-30m
CPCSSY3	360GS10E-P-X3	360GS10E 10/100BASE-T 2X3 & 1X4 Crossover	0	1,4,6,7,8,9,C,Z	F, M	3-100ft / 1-30m
CPCSSY5	360GS10E-P-X5	360GS10E 1000BASE-T MDI-X Crossover	0	1,4,6,7,8,9,C,Z	F, M	3-100ft / 1-30m
CPCS4Y2	360GS10E117-P	360GS10E Single-ended Solid Plenum Cordage	0	1,4,6,7,8,9,C,Z	F, M	3-100ft / 1-30m
CPCSSZ2	360GS10E-L	360GS10E Solid LSZH Cordage	0	1,2,3,4,6,7,8,9,B,C,Z	F, M	3-100ft / 1-30m
CPCSSZ3	360GS10E-LX3	360GS10E 10/100BASE-T 2X3 & 1X4	0	1,2,3,4,6,7,8,9,B,C,Z	F, M	3-100ft / 1-30m
CPCSSZ5	360GS10E-LX5	360GS10E 1000BASE-T MDI-X Crossover Solid LSZH Cordage	0	1, 2, 3, 4, 6, 7, 8, 9, B, C, Z	F, M	3-100ft / 1-30m
CPCS4Z2	360GS10E117-L	360GS10E Single-ended Solid LSZH Cordage	0	1,2,3,4,6,7,8,9,B,C,Z	F, M	3-100ft / 1-30m
CPCSSM2	360GS10E-H	360GS10E 23-Gauge Patch Cable	0	1,2,6,7,8,9,C,Z	F, M	101-300ft / 31-100m
CPCSSO2	360GS10E-PH	360GS10E 23-Gauge Plenum Patch Cable	0	6,7,8,9,C,Z	F, M	101-300ft / 31-100m
CPCSSW2	360GS10E-LH	360GS10E 23-Gauge LSZH Patch Cable	0	8,C,Z	F, M	101-300ft / 31-100m

Ordering Material ID Example: **CPCSSX2-02F007**

Information regarding T568A standard (A-wired) patch cord is available from your local sales representative.
 *SecureMAX Patch Cords and Accessories are not available for sale in Europe, Russia, Australia and Japan.
 Please contact your local sales representative to check availability in your country.

GIGASPEED X10D 360GS10E ZONE EXTENSION CORD

Material ID	Product Number	Description	Modular Jack Color	Cord Color Options	UOM	Cable/Cordage Length Options
CPCSUX2	360GS10E-MGS600	360GS10E-MGS600 on 1095B Solid Cordage	1,2,3,4,5,6,7,8,9	1,2,3,4,6,7,8,9,B,C,Z	F, M	3-100ft / 1-30m
CPCSUY2	360GS10E-MGS600-P	360GS10E-MGS600 on 2095B Solid Plenum Cordage	1,2,3,4,5,6,7,8,9	1,4,6,7,8,9,C,Z	F, M	3-100ft / 1-30m
CPCSUZ2	360GS10E-MGS600-L	360GS10E-MGS600 on 3095B Solid LSZH Cordage	1,2,3,4,5,6,7,8,9	1,2,3,4,6,7,8,9,B,C,Z	F, M	3-100ft / 1-30m

Ordering Material ID Example: C P C S U X 2 - 0 2 F 0 0 7

GIGASPEED X10D MGS600 PRE-TERMINATED TO 91B SERIES CABLES

Material ID	Product Number	Description	Modular Jack Color	Cord Color Options	UOM	Cable/Cordage Length Options
CPCUUM2	MGS600-MGS600	MGS600-MGS600 on 1091B Cable	1,2,3,4,5,6,7,8,9	1,2,6,7,8,9,C,Z	F, M	10-300ft / 3-100m
CPCUUO2	MGS600-MGS600-P	MGS600-MGS600 on 2091B Plenum Cable	1,2,3,4,5,6,7,8,9	6,7,8,9,C,Z	F, M	10-300ft / 3-100m
CPCUW2	MGS600-MGS600-L	MGS600-MGS600 on 3091B LSZH Cable	1,2,3,4,5,6,7,8,9	8,C,Z	F, M	10-300ft / 3-100m

Ordering Material ID Example: C P C U U M 2 - 0 2 F 0 1 5

Jack Color Options: 0=NA, 1=Black, 2=Blue, 3=Gray, 4=Green, 5=Ivory, 6=Orange, 7=Red, 8=White, 9=Yellow

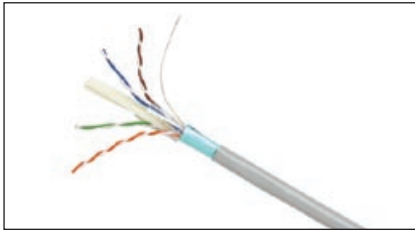
Cord Color Options: 1=BK(Black), 2=LB(Light Blue), 3=DG(Dark Gray), 4=GN(Spring Green), 6=OR(Orange), 7=RD(Red), 8=WH(White), 9=YL(Yellow), B=LL(Lilac), C=SL(Slate), Z=BL(Blue)

Unit of Measure: F=Feet, M=Meter

Cable/Cordage Length Options: 001, 002, 003. . .

Please contact your CommScope's representative for the availability of non-standard length, color and configuration.

SYSTIMAX GigaSPEED® X10D 91B Series F/UTP Cables



SYSTIMAX GigaSPEED X10D 91B Series F/UTP Cable

features and benefits

- Electrical performance guaranteed to meet or exceed the channel specifications of Amendment 1 to ISO/IEC 11 801:2002 Class E_A, and ANSI/TIA-568-C.2 Category 6A up to 500 MHz when used as part of a GigaSPEED X10D F/UTP Channel in registered SYSTIMAX installations
- 4-pair construction with aluminum foil tape and isolator center member provides extra margin of performance required for high-bandwidth applications
- 1291 Non-Plenum cable is ETL listed as CMR and CMG. This cable is constructed with a single jacket.
- 2291 Plenum cable is ETL listed as CMP. This cable is constructed with a single jacket.
- 3291 LSZH cable meets the requirements of IEC 60332-3. This cable is constructed with a single jacket.
- ETL Listed - 1291 Riser rated CMR and CMG
- IEC Certified - 3291 LSZH rated IEC 60332-3
- Can support network line speeds up to at least 10 Gbps
- Qualifies for the SYSTIMAX 20-Year Extended Product Warranty and Applications Assurance when included as part of a registered SYSTIMAX GigaSPEED X10D F/UTP channel

ORDERING INFORMATION:

Material ID	Product Number	Description
760081364	1291B BL 4/23 R1000	GigaSPEED X10D 1291B Category 6A F/UTP Non-Plenum Cable, blue jacket, 4 pair count, 1000 ft (305 m) length, reel
760081372	1291B GR 4/23 R1000	GigaSPEED X10D 1291B Category 6A F/UTP Non-Plenum Cable, gray jacket, 4 pair count, 1000 ft (305 m) length, reel
760081380	1291B OR 4/23 R1000	GigaSPEED X10D 1291B Category 6A F/UTP Non-Plenum Cable, orange jacket, 4 pair count, 1000 ft (305 m) length, reel
760081398	1291B SL 4/23 R1000	GigaSPEED X10D 1291B Category 6A F/UTP Non-Plenum Cable, slate jacket, 4 pair count, 1000 ft (305 m) length, reel
760081406	1291B WH 4/23 R1000	GigaSPEED X10D 1291B Category 6A F/UTP Non-Plenum Cable, white jacket, 4 pair count, 1000 ft (305 m) length, reel
760122630	2291B BL 4/23 R1000	GigaSPEED X10D 2291B Category 6A F/UTP Plenum Cable, blue jacket, 4 pair count, 1000 ft (305 m) length, reel
760122655	2291B SL 4/23 R1000	GigaSPEED X10D 2291B Category 6A F/UTP Plenum Cable, slate jacket, 4 pair count, 1000 ft (305 m) length, reel
760122648	2291B WH 4/23 R1000	GigaSPEED X10D 2291B Category 6A F/UTP Plenum Cable, white jacket, 4 pair count, 1000 ft (305 m) length, reel
760081315	3291B BL 4/23 R1000	GigaSPEED X10D 3291B Category 6A F/UTP Low Smoke Zero Halogen Cable, blue jacket, 4 pair count, 1000 ft (305 m) length, reel
760081323	3291B WH 4/23 R1000	GigaSPEED X10D 3291B Category 6A F/UTP Low Smoke Zero Halogen Cable, white jacket, 4 pair count, 1000 ft (305 m) length, reel

SYSTIMAX 360™ GigaSPEED® X10D F/UTP Modular Panels



SYSTIMAX 360 GigaSPEED X10D Modular Panel,
48 Port, Front View



SYSTIMAX 360 GigaSPEED X10D Modular Panel,
48 Port, Rear View



SYSTIMAX 360 GigaSPEED X10D Angled
Modular Panel, 24 Port

features and benefits

- Simple-to-use grounding solution
- Straight and Angled constructions, both iPatch (intelligence) Ready
- Features the elegant SYSTIMAX 360 design
- Supports 5 meter cables in 3 and 4 connector channels, 3 meter cables in 2 connector channels and cross connect cords down to 1 meter when using the GigaSPEED X10D Shielded High Density Information Outlet (HGS620)
- iPatch-Ready - field upgradable to iPatch without the need to remove patch cords, meaning no network downtime
- TAA compliant
- Easy cable routing and bundling through improved rear cable management solution like traditional 360
- Electrical performance guaranteed to meet or exceed the channel specification of Amendment 1 of ISO/IEC 11801 Class E_A and ANSI/TIA-568-C.2 Category 6A up to 500 MHz when used as part of a GigaSPEED X10D F/UTP Channel in registered SYSTIMAX installations
- Available in 24 and 48 port configurations
- Qualifies for the SYSTIMAX 20-Year Extended Warranty and Applications Assurance when included as part of a registered SYSTIMAX GigaSPEED X10D F/UTP Channel
- Compatible with DYMO Labeling Solution

ORDERING INFORMATION:

Material ID	Product Number	Description
760150144	360-IPR-MFTP-E-HD6B-1U-24	SYSTIMAX 360 GigaSPEED X10D Evolve High Density F/UTP Modular Panel, 24-port
760151498	360-IPR-MFTP-E-HD6B-2U-48	SYSTIMAX 360 GigaSPEED X10D Evolve High Density F/UTP Modular Panel, 48-port
760151290	360-IPR-MFTPA-E-HD6B-1U-24	SYSTIMAX 360 GigaSPEED X10D Evolve High Density F/UTP Angled Modular Panel, 24-port
760151746	360-IPR-MFTPA-E-HD6B-2U-48	SYSTIMAX 360 GigaSPEED X10D Evolve High Density F/UTP Angled Modular Panel, 48-port
760151480	360-MFTP-LKB	SYSTIMAX 360 GigaSPEED X10D Evolve High Density F/UTP Modular Panel Label Kit
760152371	360-iP-M-E-HD6B-1U-24	SYSTIMAX 360 iPatch Evolve High Density F/UTP Modular Panel, 24-port
760152389	360-iP-M-E-HD6B-2U-48	SYSTIMAX 360 iPatch Evolve High Density F/UTP Modular Panel, 48-port
760152538	360-E-C-1U	360 Evolve Panel Front Cover 1U
760152546	360-E-C-2U	360 Evolve Panel Front Cover 2U

SYSTIMAX GigaSPEED® X10D Shielded High Density Information Outlet



SYSTIMAX GigaSPEED X10D Shielded High Density Information Outlet

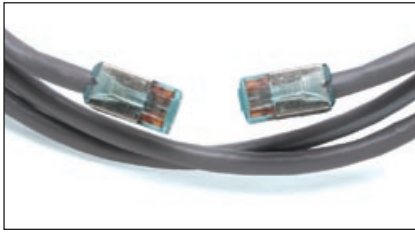
features and benefits

- Architectural design and flexibility - supports 5 meter cables in 3 and 4 connector channels, 3 meter cables in 2 connector channels and cross connect cords down to 1 meter
- Allows for multiple size cable terminations 0.270 inches up to 0.300 in. diameter over jacket and flame ratings: F/UTP and S/FTP
- Universal design and label supports both T568A and T568B wiring
- Black icons provided in strip of three: VOICE, DATA and BLANK and are also sold separately in bulk packs, available in green, blue, red, black, white and yellow
- Termination time decreased when using the HGS-TTS termination tool and GigaSPEED X10D F/UTP 91B Series Cables
- Electrical performance guaranteed to meet or exceed the channel specification of Amendment 1 of ISO/IEC 11801 Class E_A and ANSI/TIA-568-C.2 Category 6A up to 500 MHz when used as part of a GigaSPEED X10D F/UTP Channel in registered SYSTIMAX installations
- Patent pending flexible mounting system enables a single connector to mount in three separate openings: HD (High Density), M-Series and Keystone
- Rugged, full-metal construction
- IDC connector terminations on rear of base allow quick and easy installation of 22 to 24 AWG cables
- Optimal performance is achieved when using SYSTIMAX shielded patch cords
- UL® listed
- Can support network line speeds up to at least 10 Gbps
- Certified component of an integrated GigaSPEED X10D F/UTP solution
- Qualifies for the SYSTIMAX 20-Year Extended Warranty and Applications Assurance when included as part of a registered SYSTIMAX GigaSPEED X10D F/UTP Channel
- TAA compliant

ORDERING INFORMATION:

Material ID	Product Number	Description
760152801	HGS620	GigaSPEED X10D Shielded High Density Information Outlet
760152827	HGS-A-KS-BK	HGS Keystone Adapter Bulk Pack
760154211	HGS-A-MS-Black	HGS M-Series Adapter
760154252	HGS-A-MS-Blue	HGS M-Series Adapter
760154187	HGS-A-MS-White	HGS M-Series Adapter
760154195	HGS-A-MS-Ivory	HGS M-Series Adapter
760154229	HGS-A-MS-Orange	HGS M-Series Adapter
760154096	H61A-226-Green	HGS Icon Strip Bulk Pack
760154112	H61A-318-Blue	HGS Icon Strip Bulk Pack
760154120	H61A-317-Red	HGS Icon Strip Bulk Pack
760154070	H61A-003-Black	HGS Icon Strip Bulk Pack
760154047	H61A-262-White	HGS Icon Strip Bulk Pack
760154104	H61A-123-Yellow	HGS Icon Strip Bulk Pack
760152876	HGS-TTS	Hand Termination Tool - Seat Only

SYSTIMAX GigaSPEED® X10D F/UTP Patch Cords



SYSTIMAX GigaSPEED X10D G10FP Patch Cord

features and benefits

- Electrical performance guaranteed to meet or exceed the channel specification of Amendment 1 of ISO/IEC 11801 Class E_A and ANSI/TIA-568-C.2 Category 6A up to 500 MHz when used as part of a GigaSPEED X10D F/UTP Channel in registered SYSTIMAX installations
- Can support network line speeds up to at least 10 Gbps
- Certified component of an integrated GigaSPEED X10D F/UTP Solution
- Qualifies for the SYSTIMAX 20-Year Extended Warranty and Applications Assurance when included as part of a registered SYSTIMAX GigaSPEED X10D F/UTP channel

GIGASPEED X10D G10FP MODULAR PATCH CORD

Material ID	Product Number	Description (All solid conductor)	Jack Color Options	Cord Color Options	UOM	Cable/Cordage Length Options
CPCGGJ2	G10FP	G10FP on 1295 Solid F/UTP Cordage	0	1,2,3,8,9	F, M	3-300ft / 1-100m
CPCG4J2	G10FP117	G10FP Single-ended on 1295 Solid F/UTP Cordage	0	1,2,3,8,9	F, M	3-300ft / 1-100m
CPCGGK2	G10FP-P	G10FP on 2295 Solid Plenum F/UTP Cordage	0	3,8,Z	F, M	3-300ft / 1-100m
CPCG4K2	G10FP117-P	G10FP Single-ended on 2295 Solid Plenum F/UTP Cordage	0	3,8,Z	F, M	3-300ft / 1-100m
CPCGGL2	G10FP-L	G10FP on 3295 Solid LSZH F/UTP Cordage	0	8	F, M	3-300ft / 1-100m
CPCG4L2	G10FP117-L	G10FP Single-ended on 3295 Solid LSZH F/UTP Cordage	0	8	F, M	3-300ft / 1-100m

Ordering Material ID Example: **C P C G G J 2 - 0 2 F 0 0 7**

GIGASPEED X10D G10FP ZONE EXTENSION CORD

Material ID	Product Number	Description	Jack Color Options	Cord Color Options	UOM	Cable/Cordage Length Options
CA1G742	G10FP-HGS620MS	G10FP to M-series HGS620 on 1295 Solid Cordage	1,2,5,6,7	1,2,3,8,9	F, M	3-300ft / 1-100m
CA1G642	G10FP-HGS620KS	G10FP to Keystone HGS620 on 1295 Solid Cordage	1	1,2,3,8,9	F, M	3-300ft / 1-100m
CA1G542	G10FP-HGS620	G10FP to HGS620 on 1295 Solid Cordage	0	1,2,3,8,9	F, M	3-300ft / 1-100m
CA1G762	G10FP-HGS620MS-P	G10FP to M-series HGS620 on 2295 Solid Plenum Cordage	1,2,5,6,7	3,8,Z	F, M	3-300ft / 1-100m
CA1G662	G10FP-HGS620KS-P	G10FP to Keystone HGS620 on 2295 Solid Plenum Cordage	1	3,8,Z	F, M	3-300ft / 1-100m
CA1G562	G10FP-HGS620-P	G10FP to HGS620 on 2295 Solid Plenum Cordage	0	3,8,Z	F, M	3-300ft / 1-100m
CA1G772	G10FP-HGS620MS-L	G10FP to M-series HGS620 on 3295 Solid LSZH Cordage	1,2,5,6,7	8	F, M	3-300ft / 1-100m
CA1G672	G10FP-HGS620KS-L	G10FP to Keystone HGS620 on 3295 Solid LSZH Cordage	1	8	F, M	3-300ft / 1-100m
CA1G572	G10FP-HGS620-L	G10FP to HGS620 on 3295 Solid LSZH Cordage	0	8	F, M	3-300ft / 1-100m

Ordering Material ID Example: CA1G742-02F007

GIGASPEED X10D HGS620 PRE-TERMINATED TO 91 SERIES CABLES

Material ID	Product Number	Description	Jack Color Options	Cord Color Options	UOM	Cable/Cordage Length Options
CA177A2	HGS620MS-HGS620MS	M-series HGS620 to M-series HGS620 on 1291 Cable	1,2,5,6,7	8,C,Z	F, M	10-300ft / 3-100m
CA166A2	HGS620KS-HGS620KS	Keystone HGS620 to Keystone HGS620 on 1291 Cable	1	8,C,Z	F, M	10-300ft / 3-100m
CA155A2	HGS620-HGS620	HGS620 to HGS620 on 1291 Cable	0	8,C,Z	F, M	10-300ft / 3-100m
CA177B2	HGS620MS-HGS620MS-P	M-series HGS620 to M-series HGS620 on 2291 Plenum Cable	1,2,5,6,7	C,Z	F, M	10-300ft / 3-100m
CA166B2	HGS620KS-HGS620KS-P	Keystone HGS620 to Keystone HGS620 on 2291 Plenum Cable	1	C,Z	F, M	10-300ft / 3-100m
CA155B2	HGS620-HGS620-P	HGS620 to HGS620 on 2291 Plenum Cable	0	C,Z	F, M	10-300ft / 3-100m
CA177C2	HGS620MS-HGS620MS-L	M-series HGS620 to M-series HGS620 on 3291 LSZH Cable	1,2,5,6,7	8	F, M	10-300ft / 3-100m
CA166C2	HGS620KS-HGS620KS-L	Keystone HGS620 to Keystone HGS620 on 3291 LSZH Cable	1	8	F, M	10-300ft / 3-100m
CA155C2	HGS620-HGS620-L	HGS620 to HGS620 on 3291 LSZH Cable	0	8	F, M	10-300ft / 3-100m

Ordering Material ID Example: CA177A2-18F050

Jack Color Options: 0=NA, 1=Black, 2=Blue, 3=Gray, 4=Green, 5=Ivory, 6=Orange, 7=Red, 8=White, 9=Yellow

Cord Color Options: 1=BK(Black), 2=LB(Light Blue), 3=DG(Dark Gray), 4=GN(Spring Green), 6=OR(Orange), 7=RD(Red), 8=WH(White), 9=YL(Yellow), B=LL(Lilac), C=SL(Slate), Z=BL(Blue)

Unit of Measure: F=Feet, M=Meter

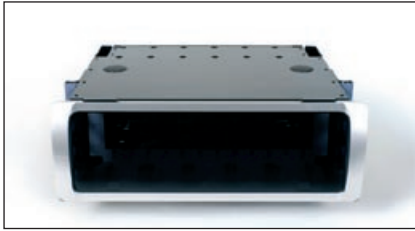
Cable/Cordage Length Options: 001, 002, 003. . .

Please contact your CommScope's representative for the availability of non-standard length, color and configuration.

SYSTIMAX 360™ G2 1U, 2U and 4U Shelves



SYSTIMAX 360G2 1U Modular Fiber Shelf



SYSTIMAX 360G2 4U Fiber Shelf



SYSTIMAX 360G2 4U Fiber Shelf, Rear View

features and benefits

- Bend limiters maximize space by integrating into the shelf trough
 - Push/push-style latch on the front trough door improves access to shelf interior (also located on rear of 4U shelf)
 - Unique open-floor trough design enhances access for patch cord latching and de-latching
 - Displays intuitively-placed port labeling when door is open
 - Features the elegant SYSTIMAX 360 design
 - Offered in fixed and sliding options
 - Available in 1RU, 2RU and 4RU sizes
 - 360G2 1U Modular Shelf is available in iPatch-Ready versions (field upgradable to iPatch without the need to remove patch cords, meaning no network downtime) or factory assembled iPatch versions
- Additional features and benefits for 4U:**
- Refined cable management rings enhance access to base of modules
 - Advanced vertical management increases flexibility
 - Larger side fiber access allows for more fiber
 - Shelf assist (patent pending) facilitates installation and ensures proper U spacing for shelf mounting

SPECIFICATIONS

	1U	2U	4U	2U-UHD	4U-UHD
Overall Height:	1.8 in (4.4 cm)	3.5 in (8.9 cm)	7.0 in (17.8 cm)	3.5 in (8.9 cm)	7.0 in (17.8 cm)
Overall Width (including mounting brackets):	19 in (48.3 cm)	19 in (48.3 cm)	19 in (48.3 cm)	19.0 in (48.3 cm)	19.0 in (48.3 cm)
Overall Shelf Depth:					
fixed	14.5 in (36.8 cm)	14.5 in (36.8 cm)	15.5 in (39.4 cm)	N/A	N/A
sliding	18.5 in (47.0 cm)	18.5 in (47.0 cm)	15.5 in (39.4 cm)	18.4 in (46.8 cm)	18.4 in (46.8 cm)
Front Trough Depth:	5 in (13 cm)	5 in (13 cm)	5 in (13 cm)	5 in (13 cm)	5 in (13 cm)
Tray Depth:	10 in (25.4 cm)	10 in (25.4 cm)	10.5 in (26.7 cm)	18.0 in (45.7 cm)	18.0 in (45.7 cm)
Weight:					
fixed	7.2 lb (3.3 kg)	10.2 lb (4.2 kg)	11.0 lb (5.0 kg)	N/A	N/A
sliding	9.0 lb (4.1 kg)	12.0 lb (5.4 kg)	11.0 lb (5.0 kg)	8.0 lb (5.0 kg)	15.0 lb (9.4 kg)
Fiber Capacity (duplex ports)	96-fiber (48 ports)	192-fiber (96 ports)	384-fiber (192 ports)	288-fiber (144 port)	576-fiber (288 port)



SYSTEMAX 360G2 2U Modular Fiber Shelf



SYSTEMAX 360 iPatch G2 Fiber Shelf

ORDERING INFORMATION:

Material ID	Product Number	Description
360G2 Ultra High Density Shelves		
760154344	360G2-4U-MOD-UHD	360G2 4U Sliding Shelf, Accepts 24 Modules
760157750	360G2-2U-MOD-UHD	360G2 2U Sliding Shelf, Accepts 12 Modules
360G2 Shelves		
760110064	360G2-4U-MOD-FX-16	360G2 4U Fixed Shelf, Accepts 16 Modules
760101071	360G2-4U-MOD-SD	360G2 4U Sliding Shelf, Accepts 12 Modules
760101055	360G2-4U-MOD-FX	360G2 4U Fixed Shelf, Accepts 12 Modules
760103143	360G2-2U-MOD-SD	360G2 2U Sliding Shelf, Accepts 8 Modules
760103168	360G2-2U-MOD-FX	360G2 2U Fixed Shelf, Accepts 8 Modules
760103085	360G2-1U-MOD-SD	360G2 1U Sliding Shelf, Accepts 4 Modules
760119123	360G2-1U-MOD-IS	360G2 1U Internal Sliding Shelf, Accepts 4 Modules
760103150	360G2-1U-MOD-FX	360G2 1U Fixed Shelf, Accepts 4 Modules
360G2 iPatch Enabled Shelves		
760105163	360 iPatch G2 LC Fiber Shelf Fixed	360G2 iPatch LC Fiber Shelf, Fixed
760105171	360 iPatch G2 LC Fiber Shelf Slide	360G2 iPatch LC Fiber Shelf, Sliding
760117432	360 iPatch InstaPATCH LC LazrSPEED	360G2 iPatch Fiber Shelf, with 4 x 12LC LazrSPEED Modules
760117424	360 iPatch InstaPATCH LC OptiSPEED	360G2 iPatch Fiber Shelf, with 4 x 12LC OptiSPEED Modules
760117440	360 iPatch InstaPATCH LC TeraSPEED	360G2 iPatch Fiber Shelf, with 4 x 12LC TeraSPEED Modules

SYSTIMAX 360™ G2 Modular Panels



SYSTIMAX 360G2 1U Modular Panel

features and benefits

- 360G2 Modular Panels are designed to be used with InstaPATCH pre-terminated trunk cable assemblies
- The 4RU Modular Panel accommodates 16 InstaPATCH 360 Modules, housing up to 384 fibers utilizing LC patching
- When utilizing the MPO Distribution Panels, fiber density can reach 1536 fibers in 4 rack units
- MPO Distribution Panels available with 2, 4, 6, and 8 MPO adapters to accommodate various configurations
- Offer excellent cable management and rear access, without restricting air flow
- By eliminating the rear enclosure found on a full shelf, the weight is substantially reduced
- Full-feature cable and cord management on the front side

ORDERING INFORMATION:

Material ID	Product Number	Description
760120287	360MP-4U	360MP 4U Panel, accepts 16 360DM or 360DP components
760106617	360MP-1U	360MP 1U Panel, accepts 4 360DM or 360DP components
760113001	360MP-1UA	Angled 360MP 1U Panel Angled, accepts 4 360DM or 360DP components

SYSTIMAX 360G2 Panel and Shelf Accessories

Products listed below are accessories to the 360G2 Ultra High Density Shelves, 360G2 Shelves, 360G2 iPatch Enabled Shelves and 360G2 Modular Panels located on pages 20-22.

ORDERING INFORMATION:

Material ID	Product Number	Description
760105148	360-iP-UP-KIT-G2-LC	360 iPatch Upgrade Kit for 360G2-1U-MOD Shelves
760128942	SMB-KIT-8-1/2-360G2	1/2 in. Shelf Mount Brackets and covers for 360G2 4U Fiber Shelf
760128959	SMB-KIT-4-3/4-360G2	3/4 in. Shelf Mount Brackets and covers for 360G2 4U Fiber Shelf
760086215	360G2-1U-TROUGH	360 1U Trough Assembly Kit
760093567	360G2-2U-TROUGH	360 2U Trough Assembly Kit
760105676	360G2-1U-LABEL	360G2 1U Shelf Flip Label Kit
760105684	360G2-2U-LABEL	360G2 2U Shelf Flip Label Kit
760101410	360G2 4U-FLK	360G2 4U Flip Label Kit
760109462	360G2 MOD Panel Blank (4 Panels)	360G2 Blank Panel

InstaPATCH® 360 Pre-Terminated Fiber Solution

features and benefits

- LazrSPEED shelves and modules are constructed with LazrSPEED 550 to provide headroom for future system upgrades
- TeraSPEED offers 60% increase in bandwidth due to Zero Water Peak in the E-band (1400 nm window) in single-mode applications
- Factory terminated and tested cable and apparatus for instant field connections with guaranteed quality and performance
- 12-fiber MPO connector based modular design enables simple connections
- Provides opportunities for lower total installed system cost (material plus labor)
- Up to 50% savings in space due to the increased density
- Designed for administrative convenience guaranteed transmit-to-receive connectivity
- Modules are compatible with G2 Modular Cassette footprint
- No special polarity components – single module design, standard patch cords
- Easy upgrade path to parallel connectivity and wavelength division multiplexing applications
 - 40 Gbps / 100 Gbps Ethernet
 - 16 Gbps Fibre Channel
- Supports easy reconfiguration for moves, adds and changes
- Improved fiber patch cord management and improved labeling capabilities
- Translucent shutters on 24 LC panels
- Translucent plugs on 12 LC and 6 SC panels
- Developed by CommScope Labs and backed by the best-in-industry SYSTMIX warranty
- Zirconia alignment sleeves on all multimode panels



InstaPATCH 360 UHD Module 48f LC LazrSPEED



InstaPATCH 360 24LC-LS Distribution Module, Rear View



InstaPATCH 360 12LC-LS Distribution Module



InstaPATCH 360 12LC-MM Distribution Module

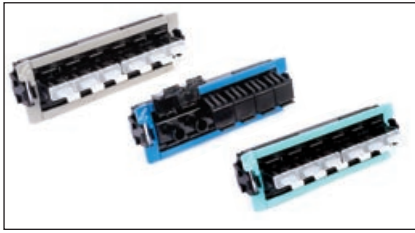


InstaPATCH 360 12SC-SM Distribution Module

ORDERING INFORMATION:

Material ID	Product Number	Description
760109884	360DM-24LC-LS	InstaPATCH 360 24-LC LazrSPEED Module
760116178	360DM-24LC-LS-6PK	InstaPATCH 360 24-LC LazrSPEED Module, 6 pack
760109926	360DM-12LC-LS	InstaPATCH 360 12-LC LazrSPEED Module
760116186	360DM-12LC-LS-6PK	InstaPATCH 360 12-LC LazrSPEED Module, 6 pack
760109967	360DM-12SC-LS	InstaPATCH 360 12-SC LazrSPEED Module
760109900	360DM-24LC-MM	InstaPATCH 360 24-LC OptiSPEED Module
760109942	360DM-12LC-MM	InstaPATCH 360 12-LC OptiSPEED Module
760109983	360DM-12SC-MM	InstaPATCH 360 12-SC OptiSPEED Module
760109892	360DM-24LC-SM	InstaPATCH 360 24-LC TeraSPEED Module
760116194	360DM-24LC-SM-6PK	InstaPATCH 360 24-LC TeraSPEED Module, 6 pack
760109934	360DM-12LC-SM	InstaPATCH 360 12-LC TeraSPEED Module
760116202	360DM-12LC-SM-6PK	InstaPATCH 360 12-LC TeraSPEED Module, 6 pack
760109975	360DM-12SC-SM	InstaPATCH 360 12-SC TeraSPEED Module
760136663	360DM-4x4P-LS	InstaPATCH 360 4x4 Parallel Optics LazrSPEED Module

SYSTIMAX 360™ Distribution Panels



InstaPATCH 360 Distribution Panels

features and benefits

- MPO Distribution Panels allow for easy migration to 40G / 100G parallel optics channels
- MPO Distribution Panels available with 2, 4, 6, and 8 MPO adapters to accommodate various configurations
- LC, SC and ST Distribution Panels can be used with pre-terminated distribution cable assemblies or with field terminated cables
- LC, SC and ST Distribution Panels are color coded for use with LazrSPEED, OptiSPEED and TeraSPEED fiber
- Single-mode (TeraSPEED) panels are available for use with UPC and APC connectors

ORDERING INFORMATION:

Material ID	Product Number	Description
760107524	360DP-8MPO	360G2 Distribution Panel, 8 MPO
760107516	360DP-6MPO	360G2 Distribution Panel, 6 MPO
760107508	360DP-4MPO	360G2 Distribution Panel, 4 MPO
760107490	360DP-2MPO	360G2 Distribution Panel, 2 MPO
760115907	360DP-24LC-LS	360G2 Distribution Panel, 24 LC, LazrSPEED
760109363	360DP-12LC-LS	360G2 Distribution Panel, 12 LC, LazrSPEED
760134551	360DP-12SC-LS	360G2 Distribution Panel, 12 SC, LazrSPEED
760109397	360DP-6SC-LS	360G2 Distribution Panel, 6 SC, LazrSPEED
760109421	360DP-6ST-LS	360G2 Distribution Panel, 6 ST, LazrSPEED
760115923	360DP-24LC-MM	360G2 Distribution Panel, 24 LC, OptiSPEED
760109371	360DP-12LC-MM	360G2 Distribution Panel, 12 LC, OptiSPEED
760134569	360DP-12SC-MM	360G2 Distribution Panel, 12 SC, OptiSPEED
760109405	360DP-6SC-MM	360G2 Distribution Panel, 6 SC, OptiSPEED
760109439	360DP-6ST-MM	360G2 Distribution Panel, 6 ST, OptiSPEED
760115915	360DP-24LC-SM	360G2 Distribution Panel, 24 LC, TeraSPEED
760109389	360DP-12LC-SM	360G2 Distribution Panel, 12 LC, TeraSPEED
760135087	360DP-12SC-SM	360G2 Distribution Panel, 12 SC, TeraSPEED
760109413	360DP-6SC-SM	360G2 Distribution Panel, 6 SC, TeraSPEED
760109447	360DP-6ST-SM	360G2 Distribution Panel, 6 ST, TeraSPEED
760115931	360DP-24LCA-SM	360G2 Distribution Panel, 24 LC Angled, TeraSPEED
760109751	360DP-12LCA-SM	360G2 Distribution Panel, 12 LC Angled, TeraSPEED
760135095	360DP-12SCA-SM	360G2 Distribution Panel, 12 SC Angled, TeraSPEED
760109769	360DP-6SCA-SM	360G2 Distribution Panel, 6 SC Angled, TeraSPEED

SYSTIMAX 360™ G2 Fiber Cartridges



SYSTIMAX 360G2 Cartridge 12-LC-LS-AQ



SYSTIMAX 360G2 Cartridge 12-LC-MM-BG



SYSTIMAX 360G2 Cartridge 12-LC-SM-BL

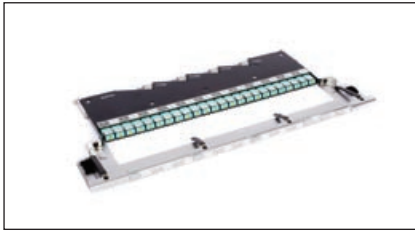
features and benefits

- LC Cartridges and Cartridges with Pigtailed are iPatch Ready for adding intelligence to network systems in the future
- 360G2 Cartridges are reverse compatible with current 1000G2 and 600G2 MOD Shelves
- Factory Terminated Fiber Pigtailed
- 6 and 12 Fiber configurations for Pigtailed Cartridges
- Supports easy configurations for moves adds and changes
- No special fiber patch cords Required for the iPatch Ready Field Upgrade
- No fiber disconnects to install iPatch Ready Field Upgrade

ORDERING INFORMATION:

Material ID	Product Number	Description
760109256	360G2 Cartridge 12-LC-LS-AQ	360G2 Cartridge, 12 LC, LazrSPEED
760109470	360G2 Cartridge 12-LC-LS-AQ-Pigtail	360G2 Cartridge, 12 LC, LazrSPEED, with pigtailed
760109298	360G2 Cartridge 6-SC-LS-AQ	360G2 Cartridge, 6 SC, LazrSPEED
760109512	360G2 Cartridge 6-SC-LS-AQ-Pigtailed	360G2 Cartridge, 6 SC, LazrSPEED, with pigtailed 1-6
760109520	360G2 Cartridge 6-SC-LS-AQ-Pigtailed	360G2 Cartridge, 6 SC, LazrSPEED, with pigtailed 7-12
760109330	360G2 Cartridge 6-ST-LS-AQ	360G2 Cartridge, 6 ST, LazrSPEED
760109603	360G2 Cartridge 6-ST-LS-AQ-Pigtailed	360G2 Cartridge, 6 ST, LazrSPEED, with pigtailed 1-6
760109611	360G2 Cartridge 6-ST-LS-AQ-Pigtailed	360G2 Cartridge, 6 ST, LazrSPEED, with pigtailed 7-12
760109264	360G2 Cartridge 12-LC-MM-BG	360G2 Cartridge, 12 LC, OptiSPEED
760109488	360G2 Cartridge 12-LC-MM-BG-Pigtail	360G2 Cartridge, 12 LC, OptiSPEED, with pigtailed
760109306	360G2 Cartridge 6-SC-MM-BG	360G2 Cartridge, 6 SC, OptiSPEED
760109538	360G2 Cartridge 6-SC-MM-BG-Pigtailed	360G2 Cartridge, 6 SC, OptiSPEED, with pigtailed 1-6
760109546	360G2 Cartridge 6-SC-MM-BG-Pigtailed	360G2 Cartridge, 6 SC, OptiSPEED, with pigtailed 7-12
760109348	360G2 Cartridge 6-ST-MM-BG	360G2 Cartridge, 6 ST, OptiSPEED
760109629	360G2 Cartridge 6-ST-MM-BG-Pigtailed	360G2 Cartridge, 6 ST, OptiSPEED, with pigtailed 1-6
760109637	360G2 Cartridge 6-ST-MM-BG-Pigtailed	360G2 Cartridge, 6 ST, OptiSPEED, with pigtailed 7-12
760109272	360G2 Cartridge 12-LC-SM-BL	360G2 Cartridge, 12 LC, TeraSPEED
760109496	360G2 Cartridge 12-LC-SM-BL-Pigtail	360G2 Cartridge, 12 LC, TeraSPEED, with pigtailed
760109314	360G2 Cartridge 6-SC-SM-BL	360G2 Cartridge, 6 SC, TeraSPEED
760109553	360G2 Cartridge 6-SC-SM-BL-Pigtailed	360G2 Cartridge, 6 SC, TeraSPEED, with pigtailed 1-6
760109561	360G2 Cartridge 6-SC-SM-BL-Pigtailed	360G2 Cartridge, 6 SC, TeraSPEED, with pigtailed 7-12
760109355	360G2 Cartridge 6-ST-SM-BL	360G2 Cartridge, 6 ST, TeraSPEED
760109645	360G2 Cartridge 6-ST-SM-BL-Pigtailed	360G2 Cartridge, 6 ST, TeraSPEED, with pigtailed 1-6
760109652	360G2 Cartridge 6-ST-SM-BL-Pigtailed	360G2 Cartridge, 6 ST, TeraSPEED, with pigtailed 7-12
760109280	360G2 Cartridge 12-LCA-SM-GR	360G2 Cartridge, 12 LC Angled, TeraSPEED
760109504	360G2 Cartridge 12-LCA-SM-GR-Pigtail	360G2 Cartridge, 12 LC Angled, TeraSPEED, with pigtailed
760109322	360G2 Cartridge 6-SCA-SM-GR	360G2 Cartridge, 6 SC Angled, TeraSPEED
760109579	360G2 Cartridge 6-SCA-SM-GR-Pigtail	360G2 Cartridge, 6 SC Angled, TeraSPEED, with pigtailed 1-6
760109587	360G2 Cartridge 6-SCA-SM-GR-Pigtail	360G2 Cartridge, 6 SC Angled, TeraSPEED, with pigtailed 7-12

SYSTIMAX 360™ Ultra High Density Shelves and Modules



InstaPATCH 360 UHD Module 48f LC LazrSPEED



3603D-1U-UP w(3) 3603M-48LC-LS A



CMS-2-02 Fiber Cord Management Sleeve



3603D-1U-144LC-TS-DP



360-SPLICE-24-FUS

features and benefits

- 50% increase in usable density
- Available in LazrSPEED and TeraSPEED to support high performance applications
- Same footprint with duplex LC and MPO connections for simple migration from 10G serial to 40/100G parallel transmission
- Supports up to (432) 10GbE, (72) 40GbE connections, or (36) 100GbE channels
- Each 1U shelf accommodates up to three InstaPATCH 360 LC modules for 144 fiber connections; or up to three MPO pass through modules for 864 fiber connections
- Modular design provides design flexibility and allows for a pay as you grow approach
- Allows for rack consolidation increasing space savings in densely populated network areas such as data center SAN environment
- Low Loss factory-terminated and tested module supports rapid deployment and uses OM4 fiber for extended distances or high bandwidth needs
- Improved cable management featuring a dedicated cord management trough per module

Splicing Shelves:

- Splicing capacity matches port capacity
- LC pass-thru panel sold separately
- Splice tray is optimized to fit virtually all SYSTIMAX and Uniprise 1U, 2U and 4U shelves
- Holders may be used with or without splice tray for flexibility of applications
- Orderable stand-alone splice tray kit containing one splice tray with cover and two splice holders
- Orderable stand-alone splice holder kit containing two fusion splice holders

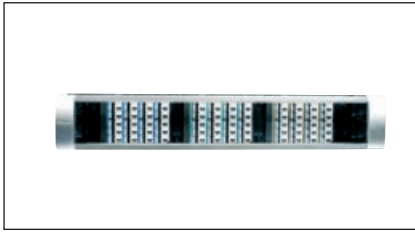
ORDERING INFORMATION:

Material ID	Product Number	Description
760110999	3603D-1U-UP	UHD Fiber Shelf, 1U, Empty
760111013	3603M-48LC-LS	InstaPATCH 360 UHD Module 48f LC LazrSPEED
760111039	3603M-48LC-SM	InstaPATCH 360 UHD Module 48f LC TeraSPEED
760111153	3603P-24MPO	UHD Adapter Panel, 24 x MPO
760112003	CMS-2-02	Fiber Cord Management Sleeve
Pre-Loaded Shelves for MPO Trunks		
760136457	3603D-1U-144LC-LS-A	UHD Fiber Shelf with 3 InstaPATCH 360 Ultra High Density Modules, 48 fiber, LC, LazrSPEED, Polarity A
760136465	3603D-1U-144LC-LS-B	UHD Fiber Shelf with 3 InstaPATCH 360 Ultra High Density Modules, 48 fiber, LC, LazrSPEED, Polarity B
760136432	3603D-1U-144LC-SM-A	UHD Fiber Shelf with 3 InstaPATCH 360 Ultra High Density Modules, 48 fiber, LC, TeraSPEED, Polarity A
760136440	3603D-1U-144LC-SM-B	UHD Fiber Shelf with 3 InstaPATCH 360 Ultra High Density Modules, 48 fiber, LC, TeraSPEED, Polarity B
760136473	3603D-1U-72MPO	UHD Fiber Shelf with 3 InstaPATCH 360 24-Port MPO Adapter Panels
Pre-Loaded Shelves for LC Trunks		
760139675	3603D-1U-144LC-LS-P	UHD Fiber Shelf, 1U, with three Ultra High Density Adapter Panels (48 fiber, LC, LazrSPEED)
760139683	3603D-1U-144LC-SM-P	UHD Fiber Shelf, 1U, with three Ultra High Density Adapter Panels (48 fiber, LC, TeraSPEED)
760111088	3603P-48LC-LS	UHD Adapter Panel, 48 fiber, LC, LazrSPEED
760111104	3603P-48LC-SM	UHD Adapter Panel, 48 fiber, LC, TeraSPEED
Splicing Shelves		
760149054	3603D-1U-144LC-TS-DP	UHD Splicing Shelf with 3 LC pass-thru panels and 3 360-LP-STACK-SPT splice tray kits, TeraSPEED
760149062	3603D-1U-144LC-LS-DP	UHD Splicing Shelf with 3 LC pass-thru panels and 3 360-LP-STACK-SPT splice tray kits, LazrSPEED
760148502	360-LP-STACK-SPT	Fusion Splice Tray Kit, stackable, large format
760148734	3603D-STBLZR	Shelf Stabilizer Kit

SYSTIMAX 360 iPatch® G2 High Density Fiber Shelf

features and benefits

- Accommodates 72 duplex LC ports (144 fibers) in 2U space
- Available empty, with the ability to be populated with 1, 2 or 3 pre-terminated modules from LazrSPEED®, TeraSPEED® or OptiSPEED® Solutions
- Supports Alpha or Beta installations
- Features the elegant SYSTIMAX 360 design



SYSTIMAX 360 iPatch G2 High Density Fiber Shelf, Front View with High Density Modules



SYSTIMAX 360 iPatch G2 High Density Fiber Shelf



SYSTIMAX 360 iPatch G2 High Density LazrSPEED® Module

SPECIFICATIONS

360 iPatch G2 High Density Shelf	
Overall Height	3.625 in. (9.21 cm)
Overall Width	19 in. (48.26 cm)
Overall Depth	19 in. (48.26 cm)
Operating Temperature	23°F to 122°F (-5°C to 50°C), max 75% non-condensing humidity
Storage Temperature	-40°F to 158°F (-40°C to 70°C)
360 iPatch G2 High Density Modules	
Overall Height	3.25 in. (8.26 cm)
Overall Width	6 in. (15.24 cm)
Overall Depth	9 in. (22.86 cm)
Operating Temperature	23°F to 122°F (-5°C to 50°C), max 75% non-condensing humidity
Storage Temperature	-40°F to 158°F (-40°C to 70°C)

ORDERING INFORMATION:

Material ID	Product Number	Description
760093336	360-iP-HD-2U-IP-SD	360 iPatch G2 HD Fiber Shelf, Slide
760093344	360-iP-HD-MOD-LC-LS	360 iPatch G2 HD LS Module
760093351	360-iP-HD-MOD-LC-LS-3	360 iPatch G2 HD LS Module (3-pack)
760093369	360-iP-HD-MOD-LC-TS	360 iPatch G2 HD TS Module
760093377	360-iP-HD-MOD-LC-TS-3	360 iPatch G2 HD TS Module (3-pack)
760093385	360-iP-HD-MOD-LC-OS	360 iPatch G2 HD OS Module
760093393	360-iP-HD-MOD-LC-OS-3	360 iPatch G2 HD OS Module (3-pack)

SYSTIMAX 360™ iPatch® Panel Manager



SYSTIMAX 360 iPatch Panel Manager, Front View



SYSTIMAX 360 iPatch Panel Manager, Rear View

features and benefits

- Innovative, cost effective, space-saving technology and design simplifies deployment in just 1U of space
- Accommodates up to 45 panels, depending on specific panel configuration
- Localized languages support includes Danish, English, French, German, Italian, Russian, Spanish, Portuguese, Polish, Chinese and Korean
- Panel Manager package contents contains: universal power supply, 16-inch panel bus jumper, 7 ft. patch cord, forty four position bus panel
- Features the elegant SYSTIMAX 360 design

SPECIFICATIONS

Height	1.7 in. (4.32 cm)
Width	19 in. (48.26 cm)
Depth	6 in. (15.24 cm)
Operating Temperature	14°F to 104°F (-10°C to 40°C), max 75% non-condensing humidity
Storage Temperature	-4°F to 158°F (-20°C to 70°C)
Input Voltage	100V-240V AC
Max input current	.6A
Power Consumption	15W
Power Plugs supported	North America, Japan, Australia, Singapore, United Kingdom, Hong Kong, Europe, South America, Korea, Argentina.
Accessories or hardware included	44-position panel bus, power supply, panel bus jumper cable, 7 in. patch cord, mounting hardware.
Weight	3.4 lbs (1.54 kg)
Display Type	LCD graphics display
Display Size	3.25 in. (8.26 cm) measured diagonally; 240 x 64 pixels
Number of Panel Manager units per Rack Manager LAN	99 Max
Microprocessor	16-bit, 16 MHz 18LF8722 processor

ORDERING INFORMATION:

Material ID	Product Number	Description
760095562	360-iP-PANEL-MGR	360 iPatch Panel Manager

SYSTIMAX 360™ iPatch® Network Manager



SYSTIMAX 360 iPatch Network Manager

features and benefits

- Innovative, cost effective, space-saving technology and design simplifies deployment, requiring no more than 1RU of space (easily mounted on the 1U bracket provided with Panel Manager)
- Utilizes the display of the Panel Manager for configuration, including IP settings
- Supports PING response for use when troubleshooting IP connectivity
- IPv6 Ready
- Network Manager is equipped with: Three power ports - Power In (2), Power Out (1), One RJ-45, 10/100Mb Ethernet port, One RJ-45, RM LAN port
- Network Manager package contents contains: 6-inch patch cord, power jumper cable

SPECIFICATIONS

Dimensions	
Depth	2.90 in (73.66 mm)
Height	1.00 in (25.40 mm)
Weight	1.00 lb (0.45 kg)
Width	6.30 in (160.02 mm)
Environmental Specifications	
Flammability Rating	UL 94 V-0
Operating Temperature	+23 °F to +122 °F (-5°C to +50 °C)
Relative Humidity	Up to 95%, non-condensing
Safety Standard	Austel, CE, cUL
Storage Temperature	-40°F to +176 °F (-40°C to +80 °C)

ORDERING INFORMATION:

Material ID	Product Number	Description
760105353	360-iP-NET-MGR-MOD	360 iPatch Network Manager



www.commscope.com

Visit our Web site or contact your local CommScope representative for more information.

© 2011 CommScope, Inc. All rights reserved.

All trademarks identified by ® or ™ are registered trademarks or trademarks, respectively, of CommScope, Inc.

This document is for planning purposes only and is not intended to modify or supplement any specifications or warranties relating to CommScope products or services.

03/11 BR-A-7